

CREATE A SEA FLOOR

oc-sea_floor_model_lab

PURPOSE: To Create A Sea Floor that has **all of the features in the Two Graphics shown below.**

METHOD: Construct a **MODEL of the Sea Floor** using a **cardboard box as the base.** On top of this base, form the features listed below in the **two Graphics.** You may use **any materials** that you choose to construct these features such as ; Construction paper, Legos, Modeling clay, Aluminum Foil or , Sand.

The **model must be three dimensional,** and stand at least **three inches high** or more, and be **Twelve inches long** or more. **LABEL (write the names)** on all of the features. This may be accomplished by using toothpicks and masking tape flags or other methods to bring attention to the feature's name.

10 Features to Model on Each Graphic . Making a Total of 20 Labeled Features on your Model

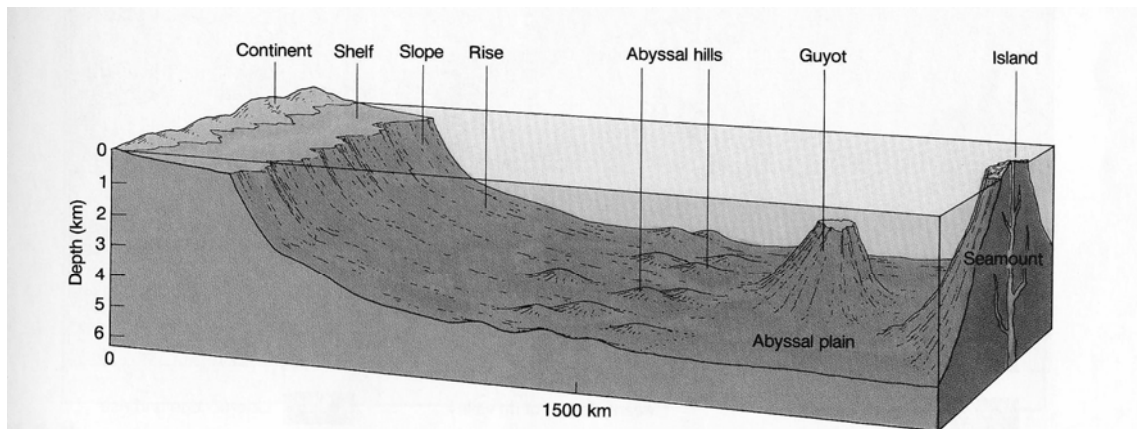
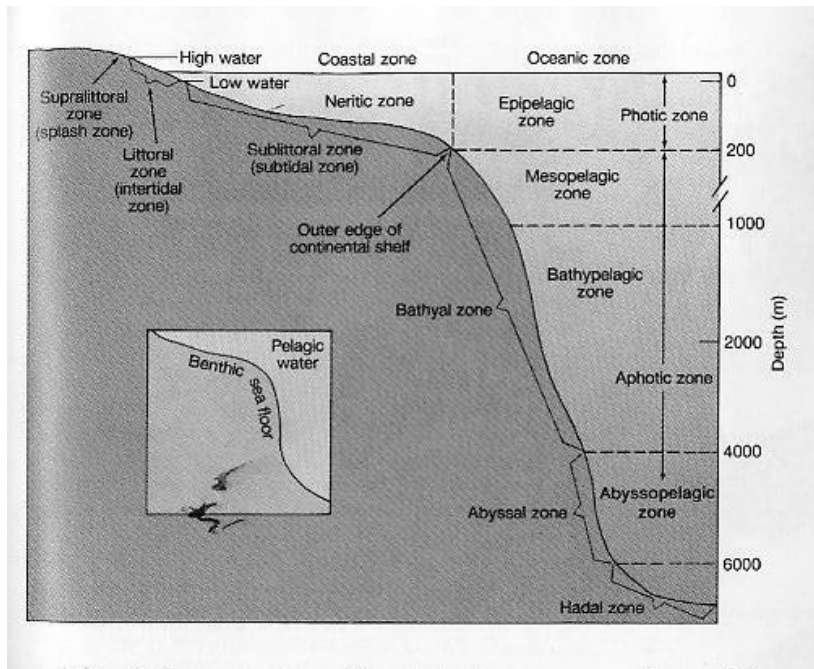


FIGURE 4.6

A generalized portion of ocean basin floor with abyssal hills, a guyot, and a seamount on the abyssal plain. Seamounts and guyots are known to be volcanic in origin (vertical $\times 100$).